

WOW! COLLECTIBLES

POSEIDON
PRE-COLORED

Follow The World of Agarthia
and Discover More!!

 contactus@worldofagartha.com

 worldofagartha.com

 [worldofagartha](https://www.instagram.com/worldofagartha)

 [@worldofagartha](https://twitter.com/worldofagartha)

Have fun creating one of the most powerful beings of Greek mythology. All you need is a printer, some scissors and a glue stick and you can add this fun character to your desk, nightstand, or any place you'd like. Visit our website to create the entire set!

READ THE WORLD OF AGARTHA SERIES!



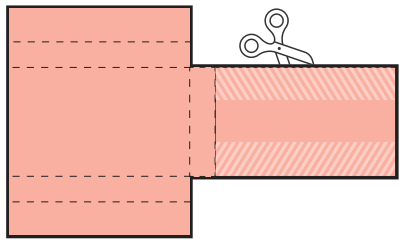
THE WORLD OF
AGARTHA

©2023 Continuum Multimedia, Inc.



1

Carefully cut out the head with scissors.

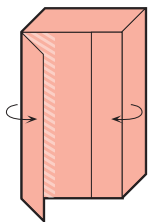


2

Fold and crease along the dotted lines.

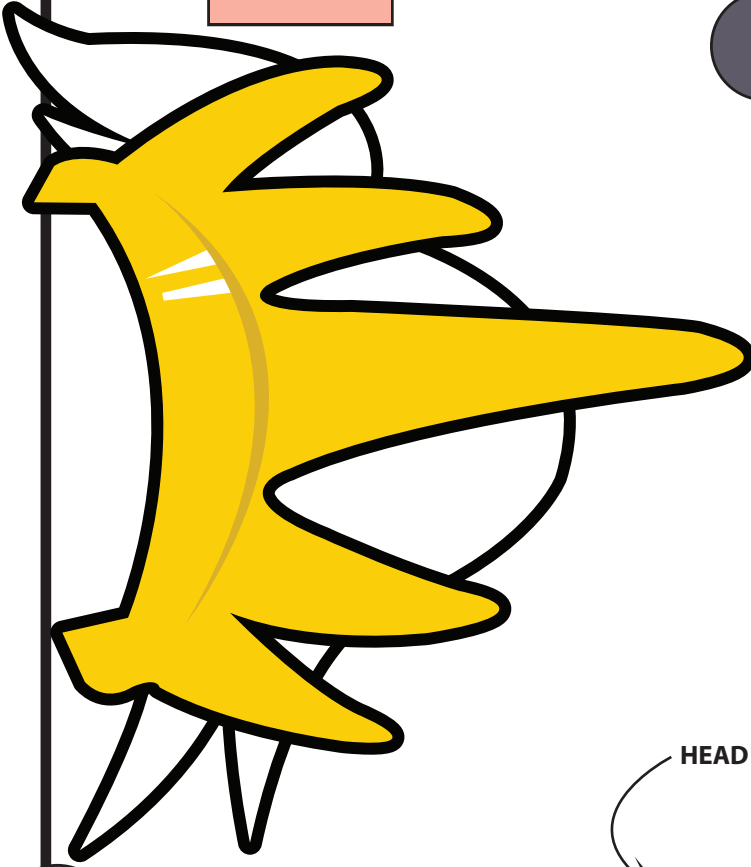
3

Apply glue to the glue strips.



4

Fold and press the flaps onto the glue strip to form the head box.



HEAD

GLUE STRIP FOR CAPE

GLUE STRIP FOR FLAP

GLUE STRIP FOR FLAP

GLUE STRIP FOR EAR

EARS

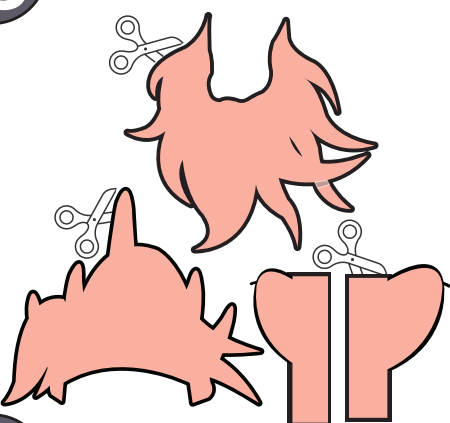
GLUE STRIP FOR EAR

GLUE STRIP FOR FRONT HAIR & CROWN

GLUE STRIP FOR BEARD

5

Carefully cut out the front hair & crown, beard, and ears.

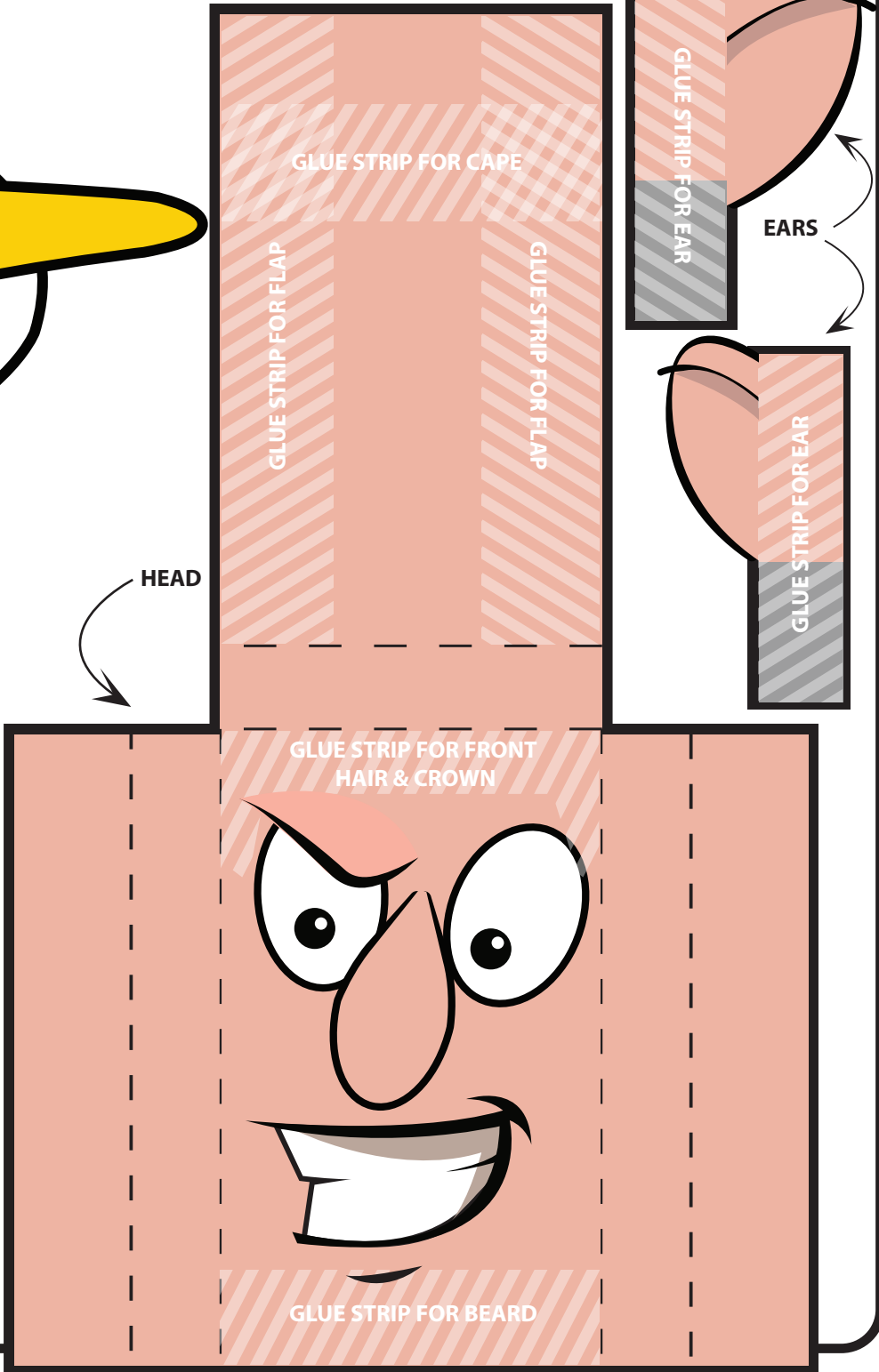


6

Apply glue to the glue strip on ears, front of head box, and back side of hair & beard.

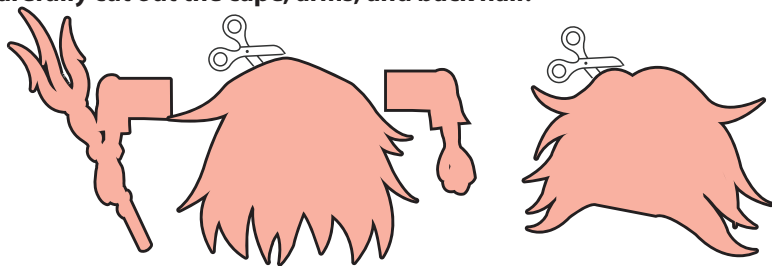
7

Press beard on front of head, then the front hair & crown. Press ears on back.



8

Carefully cut out the cape, arms, and back hair.

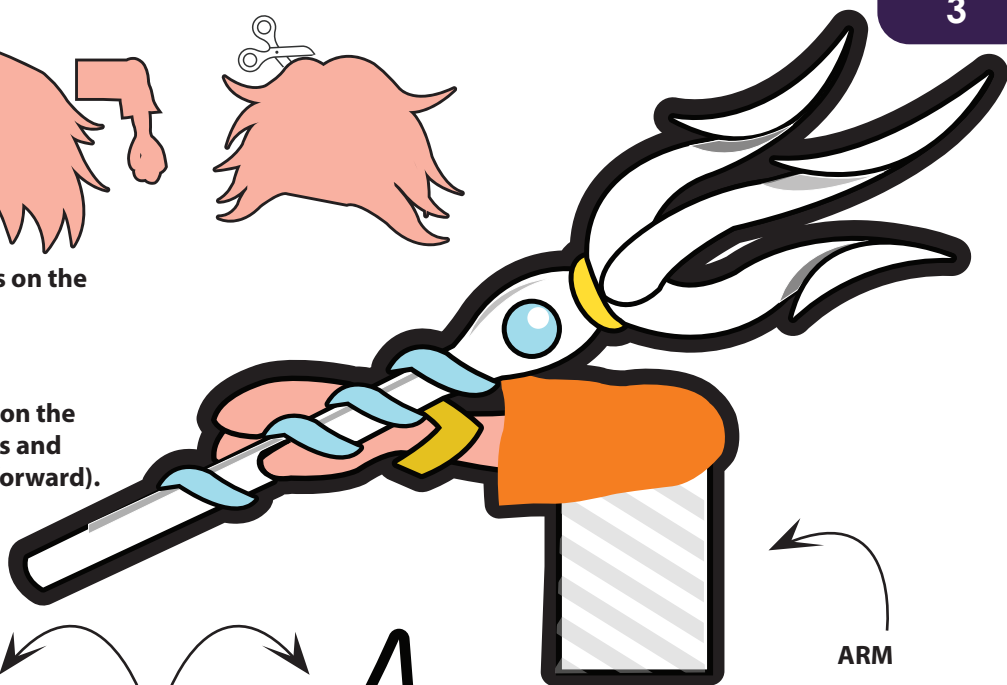


9

Apply glue to the glue strips on the cape, arms, and back hair.

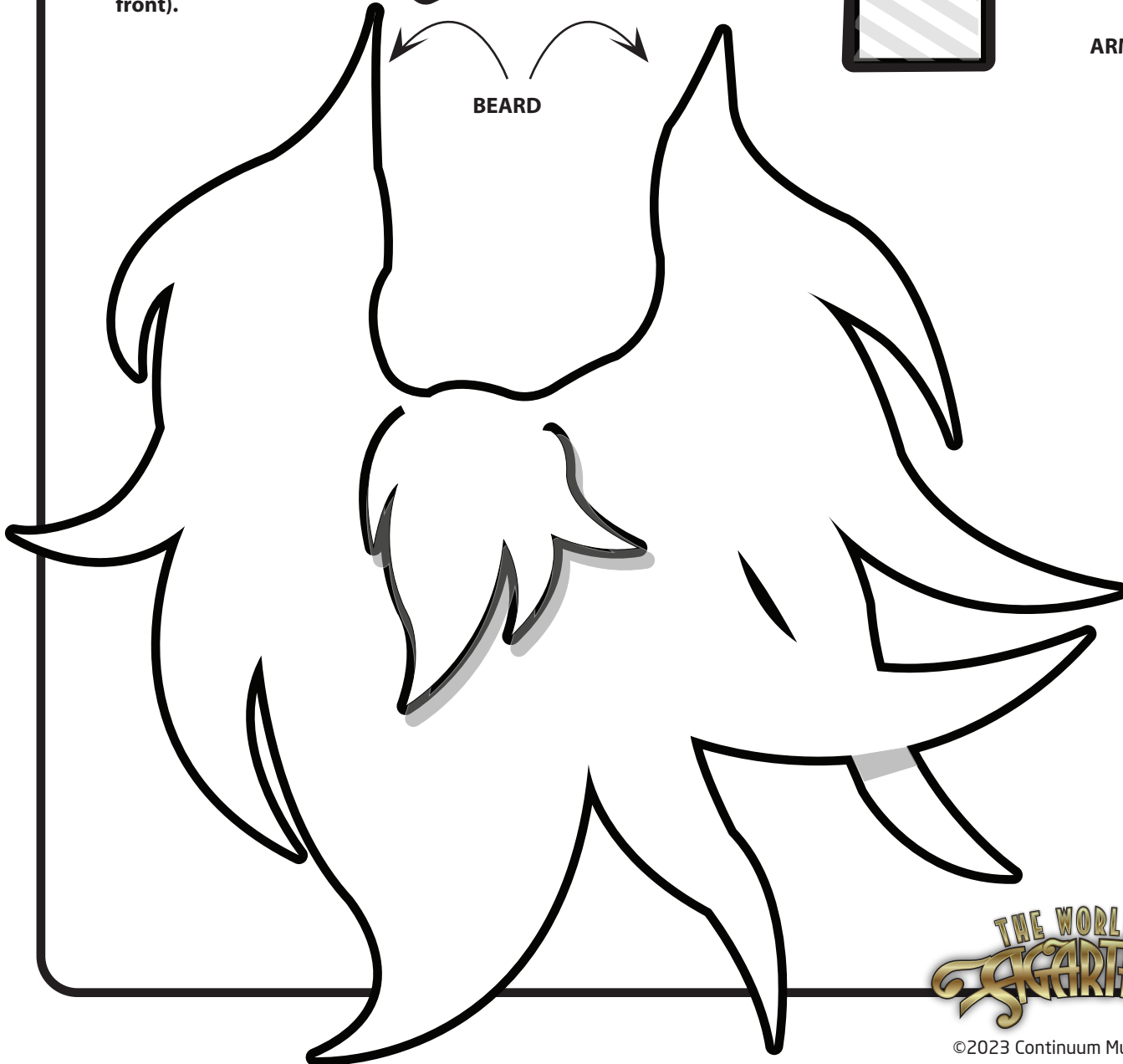
10

Apply glue to the glue strip on the head box and press the arms and then cape into place (color forward). Press the back hair on the back of the head box (color toward front).



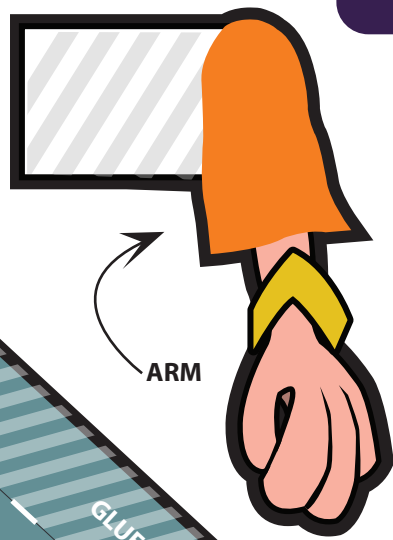
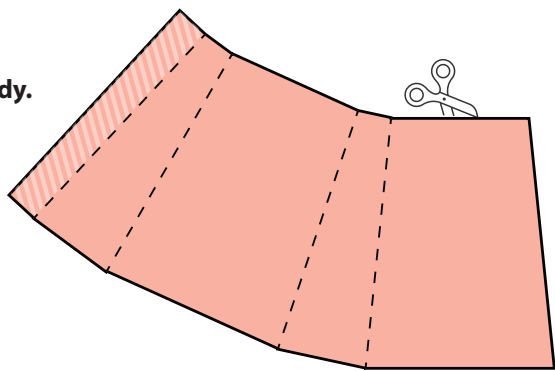
BEARD

ARM



11

Carefully cut out the body.



12

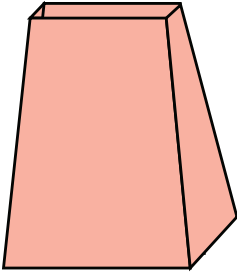
Fold and crease along the dotted lines.

13

Apply glue to the glue strip.

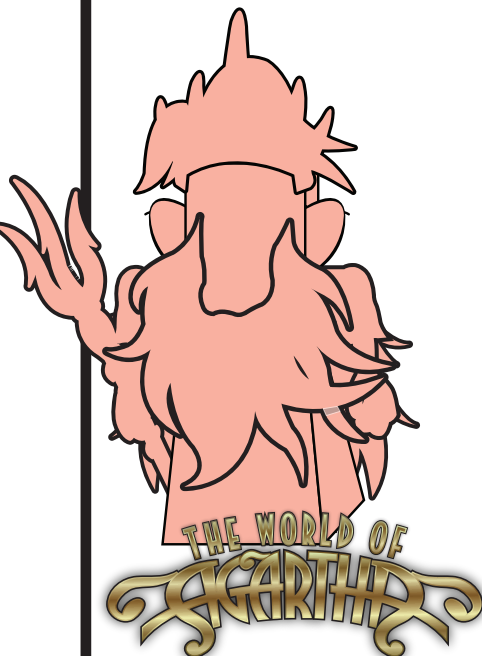
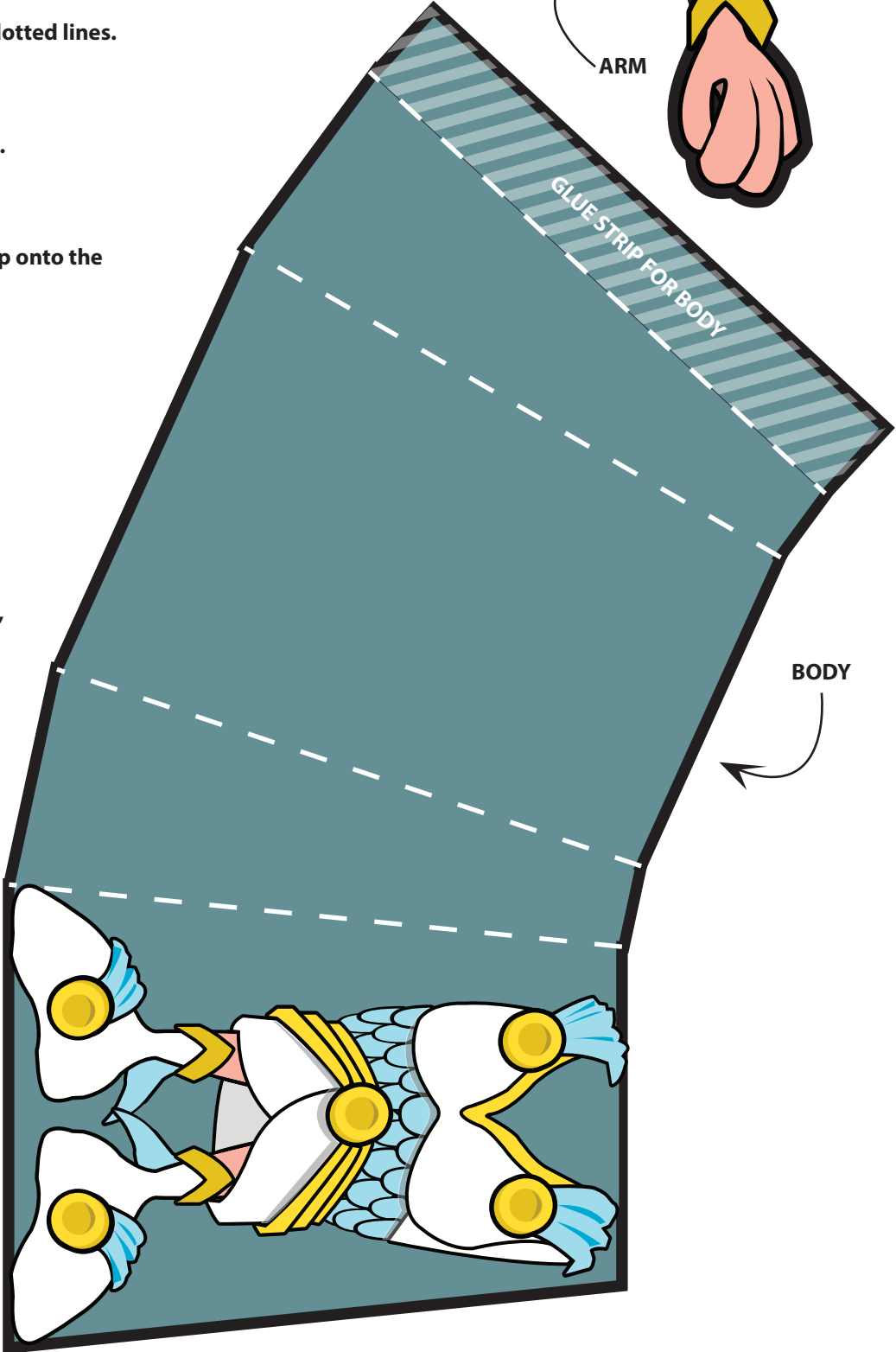
14

Fold and press the glue strip onto the inside of the body box.



15

Place the head on the body, and have fun with your new character!





BACK HAIR

CAPE

